

ModBUS thermal energy counter in accordance with EN1434

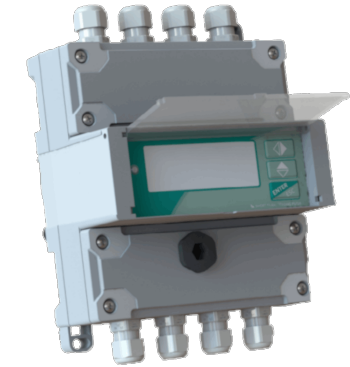
- 4 frequency inputs and 1 analogue input for flow meter
- Couple of PT500 temperature probes
- Large graphic display
- Available in MID version

KET-CCC-110 is a calculator with ModBUS RTU interface compatible with all types of flow meters: turbine, Woltmann, ultrasonic and electromagnetic.

The meter calculates heating and cooling consumption extremely accurately, also by means of an automatic switch. It is also useful for **cogeneration or trigeneration plants**.

It also acquires signals from cold/hot water sanitary meters or in any case traceable to impulsive and/or analogue inputs. It has an F-RAM type **data logger** with permanent data storage capacity of up to one year.

Equipped with **PT500 temperature probes** selected in pairs, for the correct and necessary accuracy of the calculation. The KET-CCC-110 is approved for "financial transactions" according to **EN 1434** as per European Directive 2004/22EG, available in MID version (MI-004).



APPLICATIONS
Accounting



MAGGIORI CONTENUTI ONLINE

TECHNICAL FEATURES	
GENERAL SPECIFICATIONS	Protection Range: IP65 Operative Temperature: -5 ÷ +55 °C Storage Temperature: Relative Humidity:
CASE	Dimensions: 125 x 179 x 68 mm (W x H x D) Mounting: DIN-rail Required DIN modules: 6 DIN modules Electric Board Type: Industrial Material: PC/ABS, Self extinguishing
POWER SUPPLY	Supply Voltage: 100 ÷ 240 VAC (44-66 Hz) Consumption: 5 W Connectors types: Screw terminal
DATALOGGER FUNCTION	Memory Type: F-RAM: permanent storage of data in case of power failure Data Storage Capacity: 12 months
RS485 INTERFACE	Channels: Supported Protocols: ModBUS RTU Communication Rate: Isolation: Connectors types: Screw terminal
INPUTS	Digital Inputs: 1 multifunction (totalizer reset, air conditioning, heating, auxiliary fluid volume) Analogs Inputs: One 4-20 mA input for heat carrier fluid flow measurement Frequency Inputs: 4 inputs (max. frequency 1 kHz, minimum 0.003 Hz): Heat transfer fluid volume, Cold water volume, Hot water volume, Auxiliary fluid volume (or digital input) Temperature Sensors Inputs: 2 (delivery/return)
DIGITAL OUTPUTS	Channels: 2 programmable for alarms or pulses for energy/volume Voltage Output: 30 VDC (1250 Hz) @ 100 mA
TEMPERATURE SENSOR	Sensor Type: PT500 Measure Range: -30 ÷ +200 °C Precision: ±0.2% Repeatability: +0.1% Resolution:
CERTIFICATIONS	Referends Standard: EN1434 Approvals: Security: Metrology:

